



### Edwin M. Griffin Nature Preserve

220 Sydnor Road, Spartanburg, SC 29302

**Edwin M. Griffin Nature Preserve**  
(Spartanburg, SC)

Protecting a 1.5-mile stretch of Lawson's Fork Creek, the Edwin M. Griffin Nature Preserve, is a 115-acre urban preserve and trail system owned by SPACE. The preserve offers over 5 miles of trails, numerous plant and wildlife species, greenspace and wetlands. Located just minutes from downtown Spartanburg, the Cottonwood Trail can be accessed off of Beechwood Drive or below the tennis courts at Spartanburg High School. Parking areas are available on Beechwood and Sydnor Drive. Access to Lawson's Fork Creek for water recreation is available from the Cottonwood Trail.

### Legend

- Paddle Access
- Parking
- Portage Around Dam
- Hiking Trail
- Dams
- Hiking Trail
- Major Roads
- Lawson's Fork Creek
- Pacolet River
- Parks and Nature Preserves
- Municipalities

### Clifton Beach River Access and Parking Area

239 Goldmine Road, Spartanburg, SC 29307

Clifton Beach, directly below Clifton II Dam, is a sandy beach put-in located along Goldmine Road. Parking is available across the street in the established gravel lot. Many paddlers shuttle from the Lawson's Fork Creek Goldmine Road take-out and begin paddling from Clifton Beach. With Class I and II rapids along this section of the Pacolet, it is one of the well-known and frequently used kayaking and canoeing stretches.

### River Terminology

**PORTAGE:** Portage, or portaging, is the practice of carrying a canoe or kayak over land, either around an obstacle (like dams or fallen trees) or between two bodies of water.

**PUT-IN & TAKE-OUT** A put-in is where a canoe/kayak is placed in the water, or the launching site. A take-out is where you end your trip, and take your boat out of the water. Sites that are labeled as both a put-in and take-out can be used to either begin or end a trip.

**RIVER-LEFT/RIVER-RIGHT:** When referring to which side of the river a landmark, put-in/take-out, or obstacle is located, river-left/river-right is determined by facing downstream. A take-out located on river-left would indicate that it is on the left side of the river as you are looking (or paddling) downstream.

**RIVER MILES:** Measure of distance in miles along a river or creek from its headwaters, beginning at zero and increasing further downstream.

### River Levels and Flow Data

River flow is essential to paddling. If levels are too low or too high, paddling may not be possible. Please check the following United States Geological Survey's (USGS) stream gages for real-time flow data to determine if conditions are suitable for paddling. Flow is measured either in cubic feet per second (discharge) or feet (height of river).

Pacolet River	Broad River	Lawson's Fork Creek
USGS Site No. 021556525	USGS Site No. 02153200	USGS Site No. 02156050
Ideal Conditions: 325 cfs (barely runnable) to 750 cfs (high runnable)	Ideal Conditions: 2.50 feet (barely runnable) to 5.60 feet (high runnable)	Ideal Conditions: 6 cfs (barely runnable) to 20 cfs (high runnable)

### River Rapids Classification

**Class I Rapids: Easy/Beginner**  
Fast-moving water with riffles and small waves.

**Class II Rapids: Novice**  
Straightforward rapids with wide, clear channels.

**Class III Rapids: Intermediate**  
Moderate, irregular waves which may be difficult to maneuver.

**Class IV Rapids: Advanced**  
Intense, powerful but predictable rapids requiring precise boat handling in turbulent water.

### Glendale Dam and Portage

Take-Out Above the Dam: 103 Emma Cudd Road, Spartanburg, SC 29307  
Put-In Below the Dam: 181 Emma Cudd Road, Spartanburg, SC 29307

Avoid the dam entirely. Portage is available river right, with river accesses above and below the dam. There is a Class IV rapid after the dam that can be avoided by portaging 50 yards further downstream. The river access river-left on Glendale Avenue is a put-in only. The stretch from here to the Goldmine Road take-out is not recommended for beginners, as the creek's difficulty can vary from Class III to Class IV depending on flow. Paddlers should be aware of swift moving water and possible wood and debris strainers on this section. The Glendale Bridge can be used to cross the creek and access the Glendale Greenway.

### Upper and Lower Pacolet Shoals

Upper Pacolet Shoals take-out: 1461 Sunny Acres Road, Pacolet, SC 29372  
Lower Pacolet Shoals put-in: 167 Montgomery Avenue, Pacolet, SC 29372

After the confluence of Lawson's Fork Creek and the Pacolet River, there are no rapids. Approaching the Town of Pacolet, portage around the first dam is available on river right. Restrooms are available adjacent to the water tower by the bridge on Sunny Acres Drive. If you plan to continue your paddle, please portage around both dams to the next put-in on Montgomery Drive. Paddling in between the two dams is not permitted.

### Glendale Shoals Preserve and Greenway

249 Glendale Avenue, Spartanburg, SC 29307

The Glendale Shoals Preserve is a joint effort of SPACE, GOLS, and Wofford College, consisting of 13 protected acres. Located at the old Glendale Mill on Lawson's Fork Creek, the property is scenic, with a waterfall that cascades over a dam. The Glendale Greenway (river-left) is a 1-mile loop circling the remains of the old mill and along the shoals of Lawson's Fork.

### Welcome to the Pacolet and Lawson's Fork Blueway

The Pacolet River and Lawson's Fork Creek Blueway provides 50 miles of river travel and recreation that begins near downtown Spartanburg and extends to the Town of Lockhart along the Broad River. This blueway project was started in 2008 by the Palmetto Conservation Foundation and its partners, the South Carolina Department of Natural Resources and Spartanburg County. Throughout the life of this project, additional groups and organizations contributed their time and effort into the planning process of the blueway.

Wildflowers, forests, and historic sites line the banks along many stretches of Lawson's Fork Creek and the Pacolet River. This watershed supports many uncommon plants and animals, including the federally listed Bunched arrowhead, Bog turtle, and Carolina heelsplitter. The blueway is also a good reminder of the textile industry that once ruled the area, with historic mill sites seen along the banks of the old mill villages in Glendale, Clifton, Pacolet and Lockhart.

Learn how you can protect this and other hometown rivers by visiting [www.UpstateForever.org](http://www.UpstateForever.org). The Glendale Outdoor Leadership School offers guided tours of Lawson's Fork Creek and the Pacolet River; visit [www.setgols.com](http://www.setgols.com) for more information. This and other blueway maps are available at [www.gopaddlesc.com](http://www.gopaddlesc.com).



### The Pacolet and Lawson's Fork Blueway

A Map and Guide to the Pacolet River Scenic Corridor

March 2015

Map Designed by Upstate Forever. All Rights Reserved.

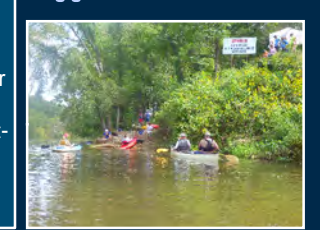
Pictures kindly provided by Upstate Forever, Town of Lockhart, and Palmetto Conservation Foundation.

Source: Esri, DigitalGlobe, GeoEye, i-cubed, USDA, USGS, AEX, Getmapping, Aergrid, IGN, IGP, swisstopo, and the GIS User Community

### Upper and Lower Pacolet Shoals

Upper Pacolet Shoals take-out: 1461 Sunny Acres Road, Pacolet, SC 29372  
 Lower Pacolet Shoals put-in: 167 Montgomery Avenue, Pacolet, SC 29372

After the confluence of Lawson's Fork Creek and the Pacolet River, there are no rapids. Approaching the Town of Pacolet, portage around the first dam is available on river right. Restrooms are available adjacent to the water tower by the bridge on Sunny Acres Drive. If you plan to continue your paddle, please portage around both dams to the next put-in on Montgomery Drive. Paddling in between the two dams is not permitted.



### Skull Shoals Road River Access and Parking Area

100 Skull Shoals Road, Gaffney, SC 29342

This is the last road crossing before the confluence of the Pacolet River with the Broad River. This is an established parking area and river access, with parking available in a dirt lot on river-left. The next established take-out location is the Town of Lockhart approximately 12 miles downstream (a 4.5 hour paddle).



- ### River Safety
- 1) Always wear a life jacket.
  - 2) Never boat alone.
  - 3) Leave a float plan with family or friends.
  - 4) Plan your route based on your skill level.
  - 5) Bring water and safety equipment.
  - 6) Stay away from river hazards and avoid the tailrace of dams along the Pacolet River.
  - 7) Be aware of other boaters and carry a sound-producing signal device.
  - 8) Dress appropriately and be prepared for inclement weather. Even in temperatures of 50-60° F, wet and windy weather can still cause hypothermia. Avoid wearing cotton clothing.
  - 9) Water levels can significantly and drastically change as the result of the operation of the upstream dam and/or heavy rains.
  - 10) Carry a cellular telephone and emergency numbers.

- ### Leave No Trace
- 1) Plan ahead and prepare.
  - 2) Travel on durable surfaces.
  - 3) Dispose of waste properly.
  - 4) Leave what you find.
  - 5) Respect wildlife.
  - 6) Respect private property and the privacy of others.
- For more information, please visit Leave No Trace ([www.lnt.org](http://www.lnt.org))

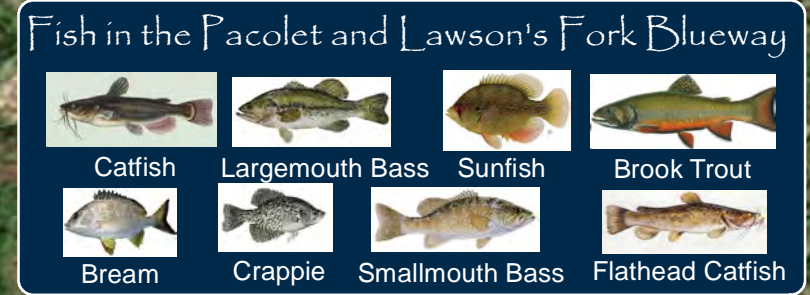
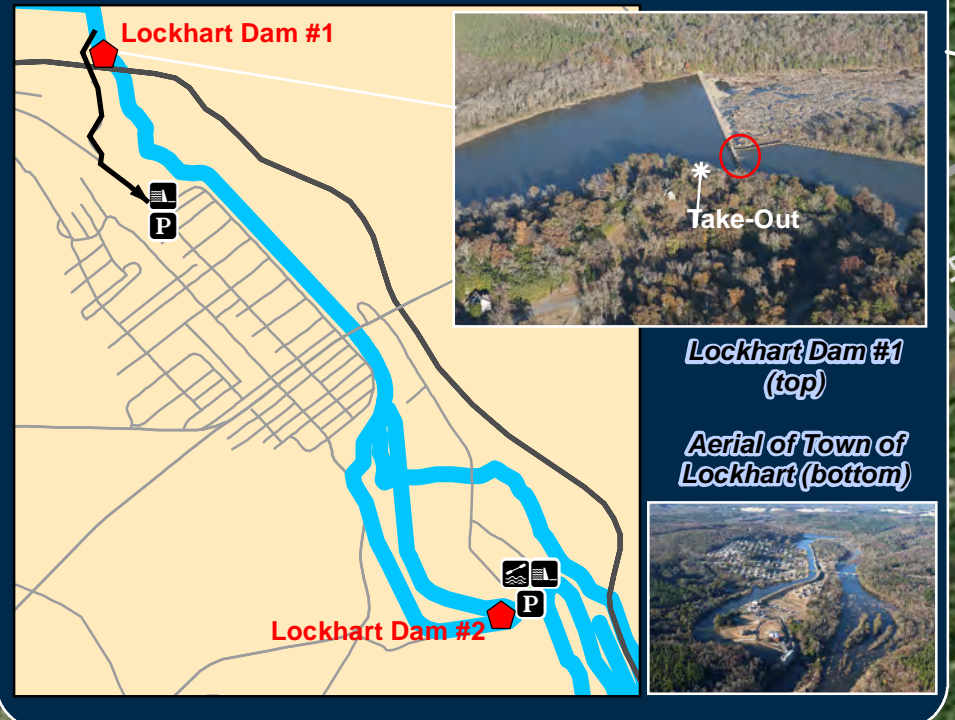
### Disclaimer

There is some risk involved in water paddling. The ultimate responsibility for safety lies solely with the individual. Upstate Forever and its partners disclaim all warranties, expressed or implied, as to the accuracy, completeness, or reliability of the information provided in this map and shall not be held liable to any user of this map.

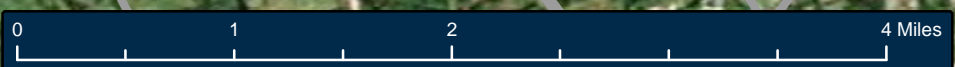
### Town of Lockhart River Access and Parking Area

Take-out above the dam: 400 Lockhart Drive, Lockhart, SC 29364  
 Put-in below the dam: 100 River Street, Lockhart, SC 29364

Paddlers should use caution when approaching the Lockhart Dam. The take-out is located river-right, before the first dam; access to the parking lot requires a short walk. The Lockhart Canal is formed by the two dams located North and South of the Town of Lockhart. Swimming and boating are not permitted within the Lockhart Canal. Paddlers wishing to continue their trip downstream should use the phone in a box on the side of Lockhart Power's building, which is connected to the Lockhart Power control room, to call (864) 545-2580. Lockhart Power will bring a truck and portage you to the put-in downstream river-right, below Lockhart Power's Hydropower Plant.



### Pacolet and Lawsons Fork Blueway Partners and Sponsors



Source: Esri, DigitalGlobe, GeoEye, Earthstar, USDA, USGS, AEX, Getmapping, Aergrid, IGN, IGP, swisstopo, and the GIS User Community